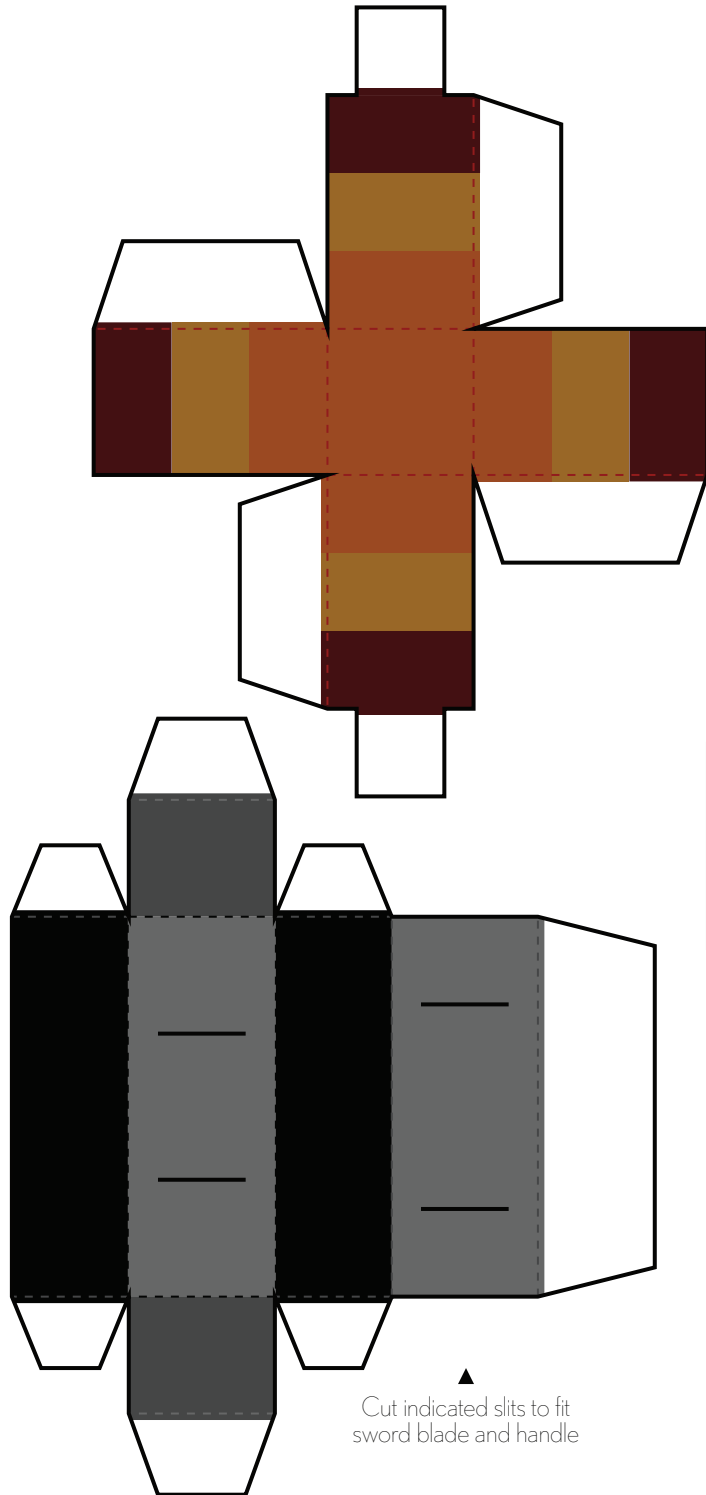


# -THE BATTLE OF- POLYTOPIA SWORD

**Instructions:** Print template on cardstock paper.  
Cut-out along solid black outlines. Fold on dashed lines.  
Tape or glue white tabs to corresponding sides  
(double-sided tape or glue stick recommended).



This is what your assembled  
SWORD Paper Foldable  
will look like.

